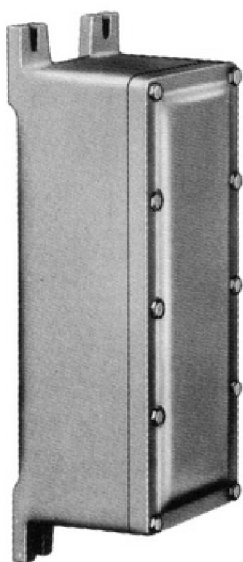


XIFC: Explosionproof Internally Flanged Control Enclosures

XIFC SERIES



FEATURES

- 13 standard sizes available
- One-piece, NEMA 4 water-tight gasket
- Premium, high-strength steel cover bolts
- Internal/external grounding provisions
- Cast-on mounting feet
- Tumble surface preparation for uniform, natural, aluminum finish

DESIGN OPTIONS

- Blind-tapped holes for sub-panels
- Sub-panels – Available in galvanized steel (XSM) or aluminum (XSA)
- Non-removable piano-hinges
- Customer specified drilling and tapping
- Installation of operators and auxiliary devices
- Custom machining – milling, counter-boring, spot-facing, blind-tapped holes, etc
- Installation and wiring of internal terminal blocks and control components
- UL Listed NNNY populated/wired control panels
- Cast-on company logos
- Multiple coating options for additional corrosion resistance
- Special mounting provisions

MATERIAL

- Enclosures cast from proprietary 359 aluminum alloy – contains less than 3/10 of 1% copper (.003)
- Standard steel metric cover bolts are zinc-plated and coated
- Nitrile “O”-rings
- XSM panels are #12 gauge galvanized steel (.108” thick)
- XSA panels are #10 gauge aluminum (.100 thick)



Certifications

Class I, Divisions 1 and 2, Groups C and D
 Class II, Divisions 1 and 2, Groups E, F, and G
 Class III
 NEMA Type 4, 7, and 9

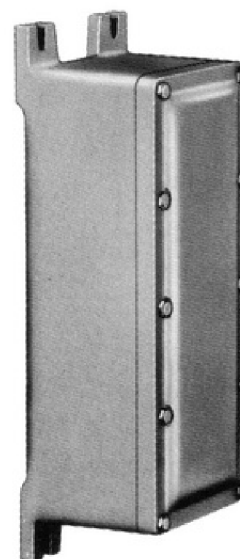
UL1203/CSA C22.2 No. 25 & 30
 UL1203/CSA C22.2 No. 25 & 30
 UL1203/CSA C22.2 No. 25 & 30
 UL50



XIFCX: Flameproof Internally Flanged Control Enclosures

FEATURES

- 13 standard sizes available
- Premium, high-strength steel, metric cover bolts
- Internal/external grounding provisions
- Cast-on mounting feet
- Tumble surface preparation for uniform, natural, aluminum finish



DESIGN OPTIONS

- Blind-tapped holes for sub-panels
- Sub-panels – Available in galvanized steel (XSM) or aluminum (XSA)
- Non-removable piano-hinges
- Customer specified drilling and tapping
- Installation of operators and auxiliary devices
- Custom machining – milling, counter-boring, spot-facing, blind-tapped holes, etc
- Installation and wiring of internal terminal blocks and control components
- Cast-on company logos
- Multiple coating options for additional corrosion resistance
- Special mounting provisions

MATERIAL

- Enclosures cast from proprietary 359 aluminum alloy – contains less than 3/10 of 1% copper (.003)
- Standard steel cover bolts are zinc-plated and coated
- Nitrile “O”-rings
- XSM panels are #12 gauge galvanized steel (.108” thick)
- XSA panels are #10 gauge aluminum (.100 thick)

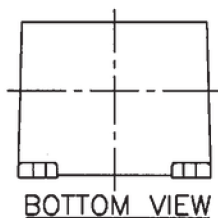
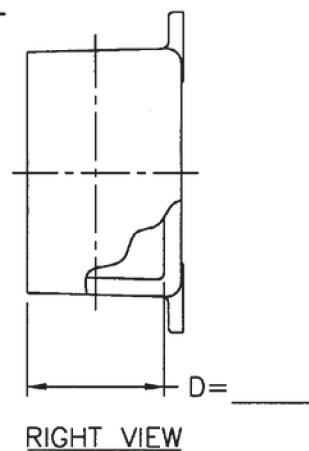
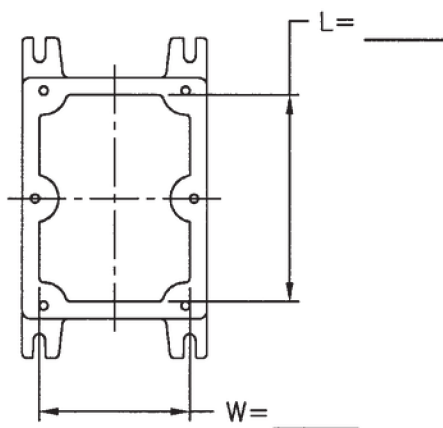
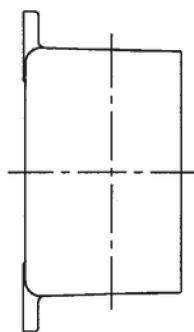
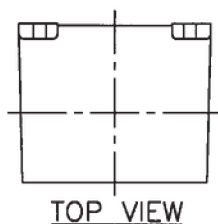
Certifications

Class I, Divisions 1 and 2, Groups C and D
 Class II, Divisions 1 and 2, Groups E, F, and G
 Class III
 NEMA Type 7 and 9
 Class I, Zone 1, AEx d IIB
 Class I, Zone 1, Ex d IIB
 0539 II 2G
 IP40

UL1203/CSA C22.2 No. 25 & 30
 UL1203/CSA C22.2 No. 25 & 30
 UL1203/CSA C22.2 No. 25 & 30
 UL50
 IEC 60079-1
 ATEX Directive 94/9/EC
 IEC 60529



Customer Design Sheet

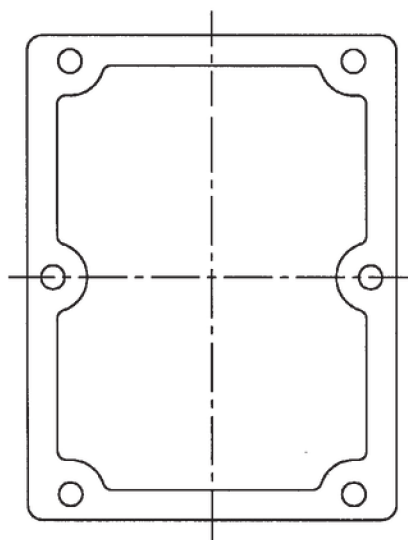


BOX LAYOUT

CAT # XIF (C)(X) _____

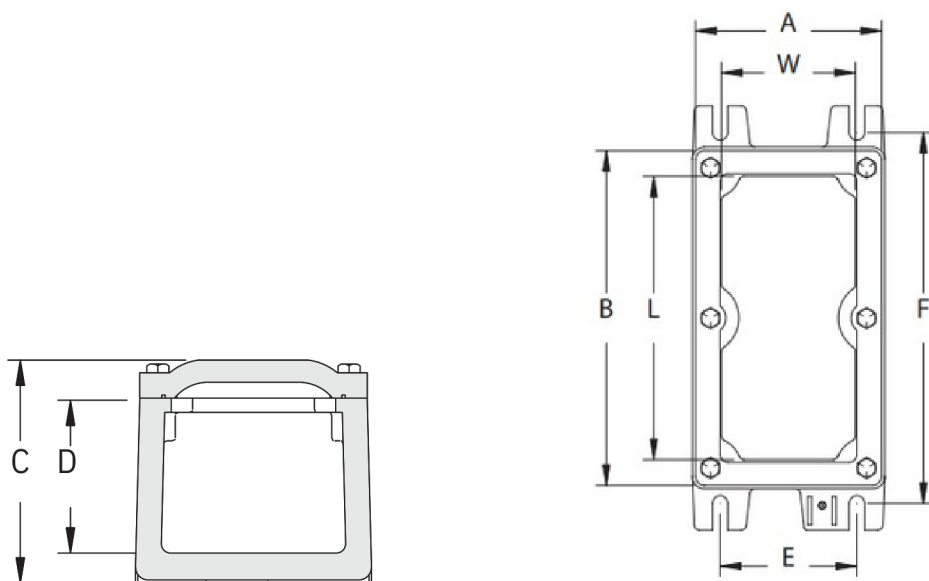
☐ N4 O RING (XIFC Only)

☐ MOUNTING PAN



COVER LAYOUT

XIFC/X SERIES

XIFC: Explosionproof Internally Flanged Control Enclosures**XIFCX:** Flameproof Internally Flanged Control Enclosures**XIFC/XIFCX Enclosures****PANELS**

XIFC/XIFCX Catalog #	Inside Nom. Dim.			Overall Dimensions			Mtg. Lug		Mtg. Bolt Size	Ship Weight (lbs.)	Pan Catalog#		Panel Dim.	
	W	L	D	A	B	C	E	F			Steel	Alum.	W	L
XIFC/X-030303	3-5/16	3-5/16	3-3/16	4-1/2	4-1/2	4-5/16	3-1/4	5-1/2	5/16	5	XSM0303	XSA0303	3	3
XIFC/X-030603	3-1/4	5-3/4	3	4-1/2	7-1/16	4-1/4	3-1/4	8	5/16	6.5	XSM0306	XSA0306	3	5-1/2
XIFC/X-030703	3-1/4	6-7/8	3	4-1/2	8-1/8	4-5/16	3-5/16	9	5/16	7.5	XSM0307	XSA0307	3	6-1/2
XIFC/X-030903	3-11/32	8-15/16	3	4-1/2	10-1/16	4-5/16	3-1/4	11	5/16	9.5	XSM0309	XSA0309	3	8-1/2
XIFC/X-031103	3-1/4	10-15/16	3	4-1/2	12	4-5/16	3-1/4	13	5/16	11	XSM0311	XSA0311	3	10-1/2
XIFC/X-031303	3-1/4	12-13/16	3	4-1/2	14-1/16	4-5/16	3-1/4	15	5/16	11.5	XSM0313	XSA0313	3	12-1/2
XIFC/X-031503	3-1/4	14-3/4	3-1/16	4-1/2	16	4-5/16	3-1/4	17	5/16	13	XSM0315	XSA0315	3	14-1/2
XIFC/X-040604	4-1/8	5-7/8	4	5-3/8	7	5-5/16	4-3/8	8-1/4	5/16	8.5	XSM0406	XSA0406	3-7/8	5-1/2
XIFC/X-041204	4-1/4	11-13/16	4	5-1/2	13-1/8	5-5/16	4-3/8	14-1/4	5/16	15.5	XSM0412	XSA0412	3-7/8	11-1/2
XIFC/X-060606	5-1/2	5-1/2	6	7	7	7-3/8	5-1/2	8-1/2	3/8	14	XSM0606	XSA0606	5-1/2	5-1/2
XIFC/X-060806	5-1/4	5-1/2	8	7	7	9-3/8	5-1/2	8-1/2	3/8	17.5	XSM0606	XSA0606	5-1/2	5-1/2
XIFC/X-061206	5-1/4	11-1/8	6	7-1/4	13-1/2	7-5/8	5-1/2	15	3/8	28	XSM0612	XSA0612	5-1/2	11-1/2
XIFC/X-070704	6-7/8	6-7/8	4	7-15/16	7-15/16	5-5/16	6-5/8	9-1/8	3/8	13	XSM0707	XSA0707	6-1/2	6-1/2