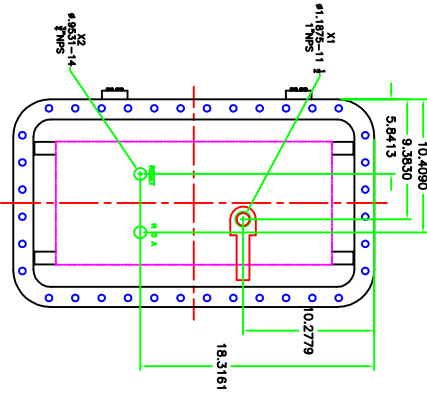
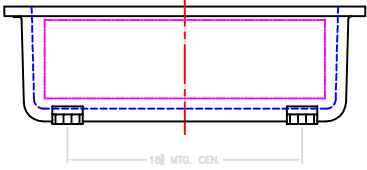
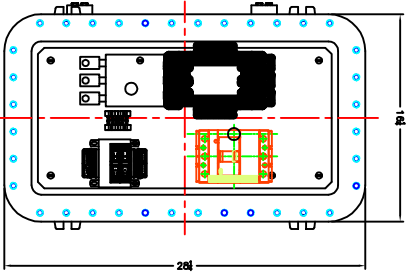
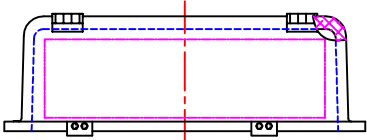
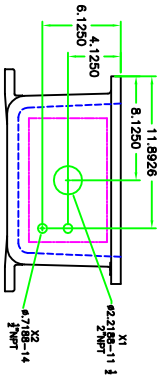




EXCD INDUSTRIAL

DRAWING NAME:	XP STANDARD SZ4 COMBD BREAKER	200
DRAWN BY:	JUSTIN ISTRÉ	124
DATE DRAWN:	6/28/2022	60
DRV.#:	EX-SZ4CB-XP12	480
APPROVED BY:		100
APPROVED DATE:		120



XE 1224 COVER

BILL OF MATERIALS

Item#	Qty.	Part #	Manufacturer	Description
1	1	XE-122408-14	ADALET	N7-9 EXPLOSION PROOF 12\"/>
2	1	200A	ABB	200A ABB BREAKER
3	1	7201	ADALET	HANDLE LOCK PLATE
4	1	5211	ADALET	HANDLE ON/OFF TAG
5	1	XSM-1224	ADALET	122408 BACK PLATE
6	1	15559	ADALET	OPER HANDLE FIRE TIN BREAKER
7	1	X4300SF3	ADALET	3 POS SEL SWITCH
8	1	X4300SF1	ABB	200VA CPT 480V/120V
9	2	A10R1/2	FERRAZ	1/2AMP PRIMARY FUSES
10	1	TRR3	FERRAZ	3AMP SECONDARY FUSE
11	1	KRBL	ADALET	RESET
12	1	B17A	ADALET	1-IND/1-N.C. CONTACT BLOCK
13	1	PI-2E1	ABB	SZ 3 ABB CONTACT AL4SN4-30-11-84)
14	1	011834616	ABB	D/L (E2000J200 60-200FLA)
15	1	01511607	ABB	DINRAIL TERMINALS
16	2	020635116	ABB	DINRAIL TERM. END PLATE
17	2	DINRAIL	ABB	DINRAIL STOPS
18	1	NMP	ADALET	DINRAIL 2"
19	2	XDP-2	ADALET	TAGSKI-HDA 1-RESET)
20	1	XDP-2	ADALET	BREATHER/DRAIN

