

EXCO SWITCHBOARD & SWITCHGEAR

EXCO SWITCHBOARDS

EXCO offers Custom service entrance rated UL891 switchgear. Our Switchgear assemblies are rated up to 5,000 Amps with a maximum short circuit current rating of 100 kaic. Our panels are designed to meet all current code and regulatory guidelines including Reduced Energy Let Through, Ground Fault, Surge Protection, and Metering.



STANDARD CONFIGURATIONS

5,000 AMP EMAX



4000 AMP MAX RATED SWITCHBOARD SECTIONS

Max. RMS Short Circuit Current Rating AMPS	MIN Amp Rating AMPS	Max. Amp Rating AMPS	Max. Rated Voltage VOLTS	NEMA 1 Enclosure Minimums (Indoor) (inches)			NEMA 3R Enclosure Minimums (Outdoor) (inches)		
				Height	Width	Depth	Height	Width	Depth
100,000	800	5,000	480	90	48	36	90	36	36
100,000	800	5,000	480	90	48	36	90	36	36
65,000	800	5,000	480	90	48	36	90	36	36
65,000	800	5,000	480	90	48	36	90	36	36
50,000	800	5,000	480	90	48	36	90	36	36
50,000	800	5,000	480	90	48	36	90	36	36

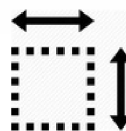
*Through Bus ONLY-6,000 AMP Main Breaker NOT Available.

NOT eligible for UL 891 *Max voltage can be 600V if amperage does NOT exceed 2,000A

3,000 AMP TMAX

2000 AMP MAX RATED SWITCHBOARD SECTIONS

Max. RMS Short Circuit Current Rating AMPS	MIN Amp Rating AMPS	Max. Amp Rating AMPS	Max. Rated Voltage Volts	NEMA 1 Enclosure Minimums (Indoor) (inches)			NEMA 3R Enclosure Minimums (Outdoor) (inches)		
				Height	Width	Depth	Height	Width	Depth
100,000	800	3,000	480	90	48	36	90	36	36
100,000	800	3,000	480	90	48	36	90	36	36
65,000	800	3,000	480	90	48	36	90	36	36
65,000	800	3,000	480	90	48	36	90	36	36
50,000	800	3,000	480	90	48	36	90	36	36
50,000	800	3,000	480	90	48	36	90	36	36



*Through Bus ONLY-6,000 AMP Main Breaker NOT Available.
6,000 A MAIN BREAKER NOT ELIGIBLE FOR UL 891

5,000 + Amps 36x48



CALL 337-785-9333 OR VISIT WWW.EXCO.COM TO ORDER!



PH: 337-785-9333
PH: 337-210-7739



EMAIL: TEAMEXCOINDUSTRIAL@GMAIL.COM



WWW.EXCO.COM

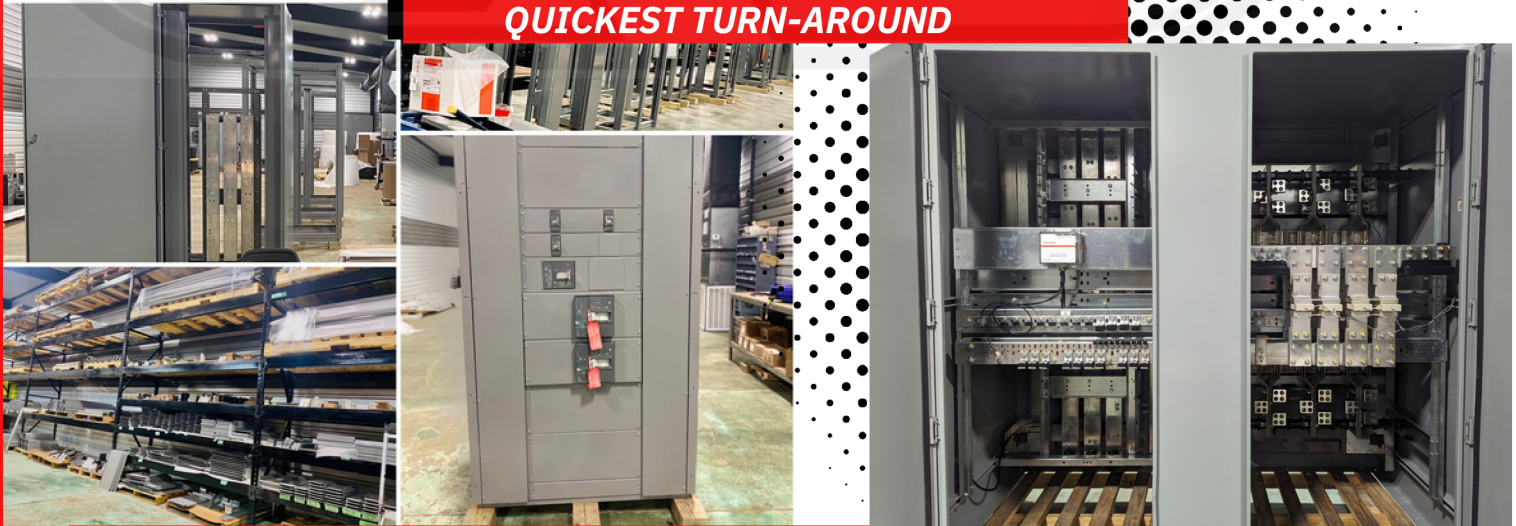


SWITCHBOARD / SWITCHGEAR



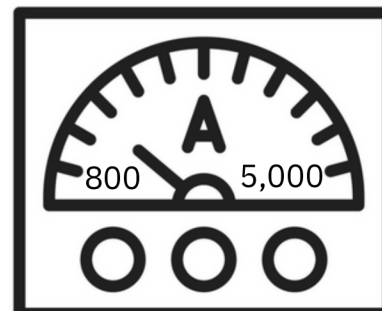
EGAN LOCATION:
127 ASPEN RD. EGAN, LA 70531
PH: 337-785-9333
EMAIL: TEAMEXCOINDUSTRIAL@GMAIL.COM

QUICKEST TURN-AROUND



STANDARD FEATURES

- Underwriter's Laboratories (UL) 891 Switchgear utilized in the protection, control, and monitoring of low voltage power distribution systems.
 - Available in amperage ratings from 800-5,000 for applications up to 600 volts.
 - Rugged corner post construction and standard powder coated structures are ideally suited for all industrial, commercial and utility applications.
 - Thru-the-door circuit breaker operation
 - Bolted, silver plated copper bus bar design
 - Short circuit withstand rating to 100kA
 - UL/ANSI circuit breakers/protection devices available from all major manufacturers including ABB, CUTLER HAMMER, GE, SIEMENS, & SQUARE D.
 - NEMA 1, 3R, AND 4/4X
 - Front access to control and communication devices, wire connections, & isolated compartments
-
- Across the line Starters
 - Drives & Softstarts
 - Disconnects & Transfer Switches
 - Distribution Panels



EGAN LOCATION:
127 ASPEN RD. EGAN, LA 70531
PH: 337-785-9333 EMAIL:
TEAMEXCOINDUSTRIAL@GMAIL.COM

QUICKEST TURN-AROUND



OPTIONAL FEATURES

- Stationary, draw out, circuit breakers either electrically or manually operated
- Power Monitoring
- TVSS
- Harmonic Mitigation Devices
- Power Factor Correction Devices
- Insulated Bus Bar
- Keyed Interlocks
- Automatic Throw Over (ATO) Schemes
- Integration with building Management Systems
- Paralleling/load Shedding Controls
- Rear Accessible
- Custom Bus Bar Configurations
- Custom Mimic Bus
- Custom Metering
- Stainless-Steel & walk-in Enclosures
- Paralleling/Load Shedding Controls
 - Emergency or Standby
 - Prime Power
 - Co-gen
 - Controls for ALL Types of Generators
 - Load Sharing for Multiple Generators
 - Speed & Voltage Control Components
- Construction & Paint Qualification for Coastal Environments per ANSI C57.12.29.

SWITCHBOARD & SWITCHGEAR

Full control panel services from design, build, install and commissioning.

Crowley LOCATION:
509 S. Parkerson, LA 70526
PH: 337-210-7739
EMAIL: TEAMEXCOINDUSTRIAL@GMAIL.COM

QUICKEST TURN-AROUND



Custom Engineering Services:

Capabilities:

- Build to print
- Custom control panels
- Point to point testing
- Full power up testing
- Finger safe electrical control panels
- Custom painting
- Motor Starter Panels

Our Engineers are experienced and Certified in:

- Solidworks
- 3D Capabilities
- AutoCAD



SWITCHBOARD & SWITCHGEAR

Full control panel services from design, build, install and commissioning.

Egan LOCATION:
127 Aspen Rd. LA, 70531
PH: 337-785-9333
EMAIL: TEAMEXCOINDUSTRIAL@GMAIL.COM

QUICKEST TURN-AROUND



Our Expert Team

Capabilities:

Our expert team of electrical technicians, designers, and engineers specialize in designing, installing, and maintaining electrical devices and systems

WHY EXCO?

- Strong understanding of industrial controls
- Start-to-finish solutions
- On-site troubleshooting
- Neat and organized wiring
- Consistency
- Turnkey installations



WWW.EXCO.COM